

Ravenscote Junior School

Our risk assessment in pictures





On arrival at school...



Two-metre space markers
Staggered arrival and departure times
and locations



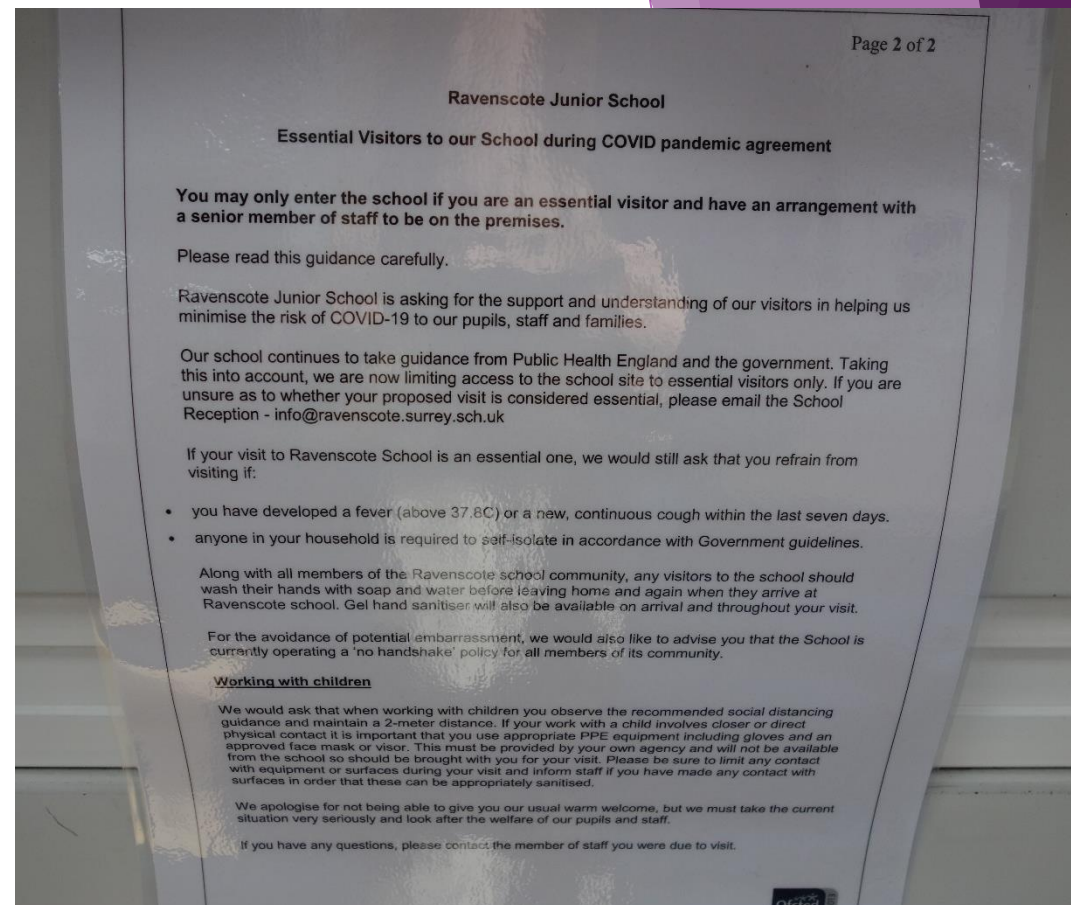
Around the school...



A clearly labelled one-way system



At reception...



Only essential visitors may come into school. There is guidance for them to follow.



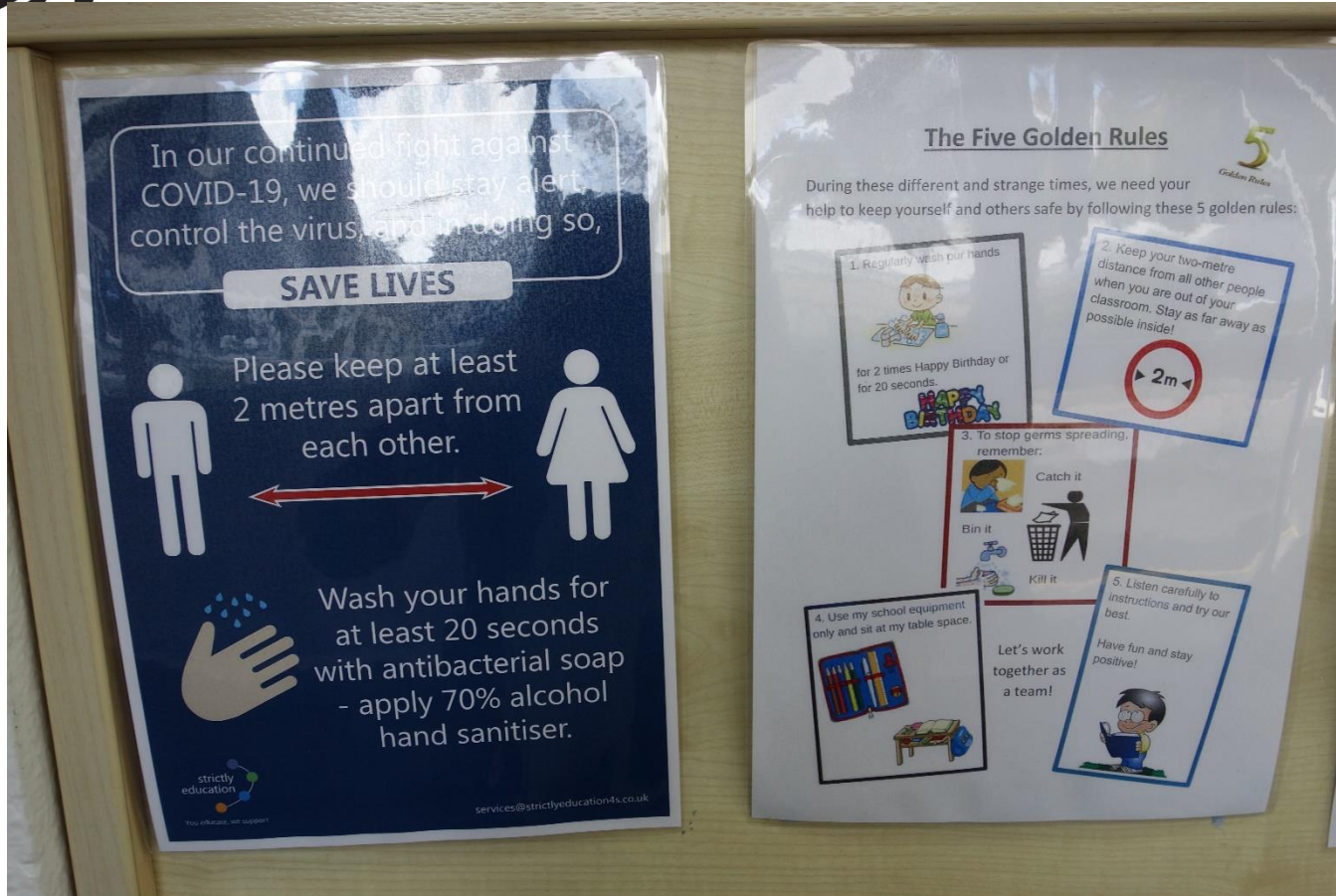
At reception...



Staff and essential visitors are protected by a screen between them.



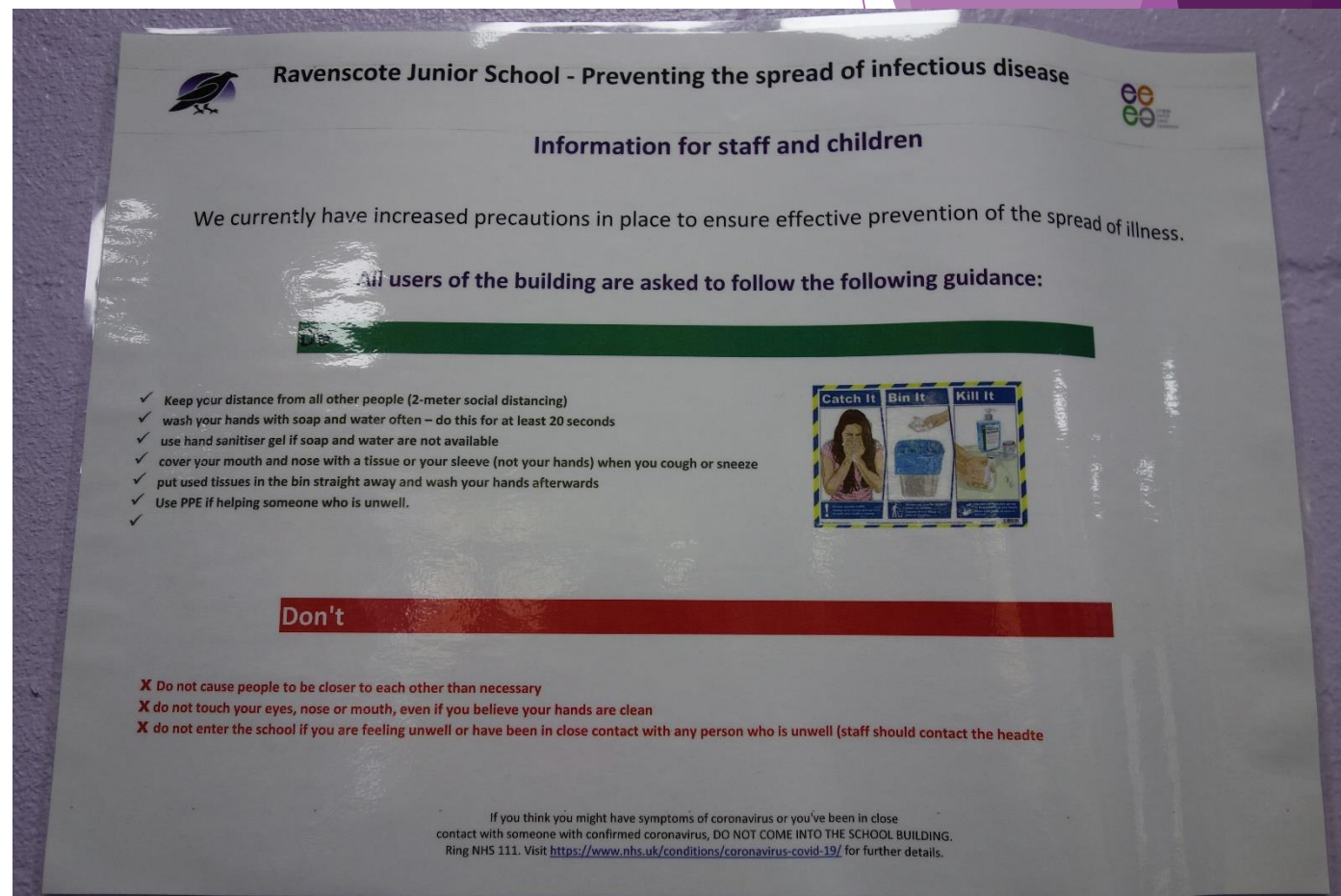
Around the communal areas...



Clear signs and posters to remind us all how to keep ourselves and others safe.



Around the communal areas...



Clear signs and posters to remind us all how to keep ourselves and others safe.



In the dining hall...



Children eat in class groups, and year groups have staggered times in the hall.



In the playground...



Staggered break times and allocated areas keep year groups separate at break and lunch.



In staff areas...



Signs and reminders of how to socially distance and keep appliances clean.



In classrooms...



Children sit in set seats and all face forwards. Tables are laid out in rows.



In classrooms...



Adult support is offered from a side-by-side perspective.



In classrooms...



Hand gel dispensers are used every time children enter and exit classrooms. There are also dispensers located in other areas of the school such as reception.



In classrooms...



Cleaning kits are used to wipe surfaces throughout the day.



In classrooms...



At least 50% of windows are open at all times to provide ventilation.



In classrooms...



Reading books are quarantined for 72-hours once returned to school. This allows children to continue to borrow school books.



In the gazebo...



Staff wear PPE if they need to attend to a medical need. The gazebo is an outside area to allow for fresh air and distancing.



In the gazebo...



Lost property and item collection boxes are located outside of the building so that anyone visiting them does not need to come inside.



In PE...



PE kit is worn to school on PE days to remove the need for changing.



In the computing suite...



The computing suite is only used by one consistent group per day.



Exercise breaks...



Children wash their hands before and after using wooden equipment.
Metal equipment is wiped down by an adult before and after use.



PPE...



Staff have been given masks for travel to and from school, and LSAs and office staff have been given visors for in school, should they wish to use them.



Policies...



Ravenscote Junior School COVID-19 Protective Measures Risk Assessment

Whole school opening from 1st September 2020

RAVENSCOTE JUNIOR SCHOOL

Covid-19 Arrangements Addendum to
Child Protection & Safeguarding Policy
2020



RAVENSCOTE JUNIOR SCHOOL

Attendance Policy
Covid -19 Appendix from September 2020



RAVENSCOTE JUNIOR SCHOOL

Covid 19 Health & Safety Policy
May 2020



RAVENSCOTE JUNIOR SCHOOL

POSITIVE BEHAVIOUR POLICY

2019-2021

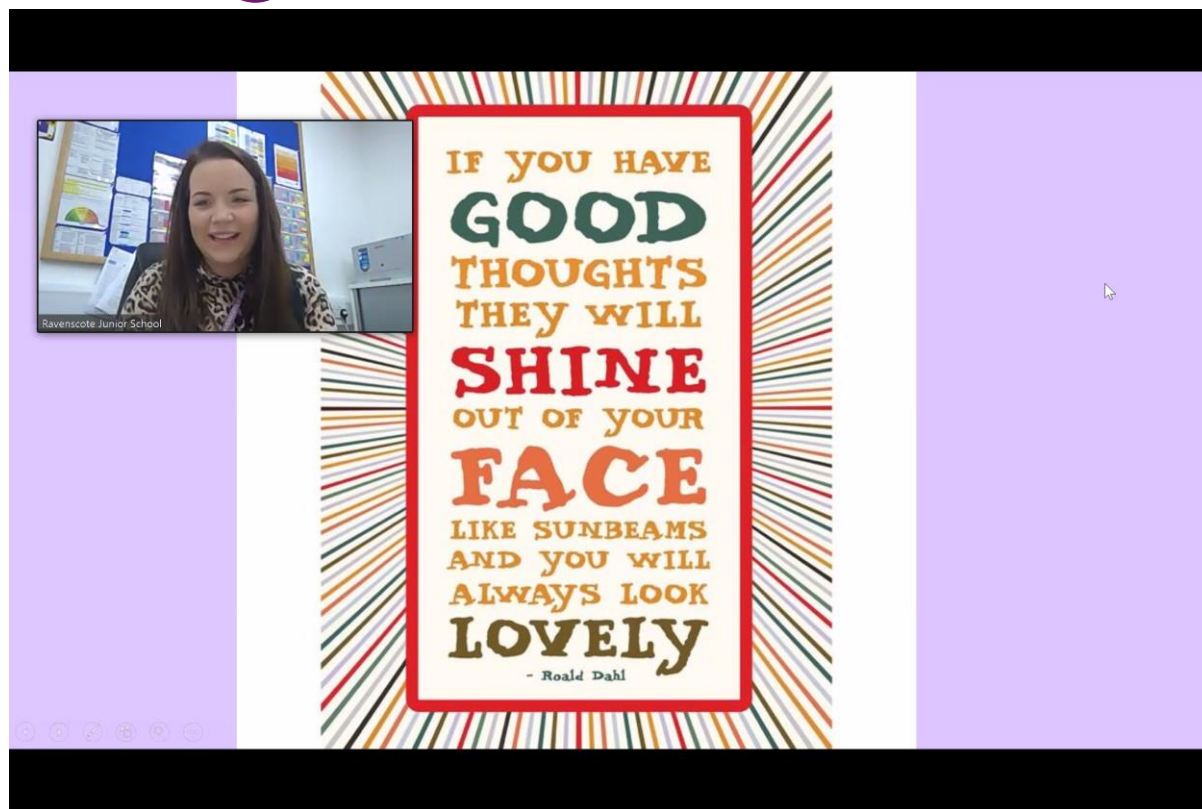
(Updated 27/5/20: updates highlighted in yellow, in addition,
COVID-19 Addendum added and appendix 1 added)



Policies and risk assessments are regularly reviewed and kept up-to-date. These are available on our website.



Meetings and assemblies...



All assemblies and staff meetings are carried out over Zoom.



Recovery Curriculum...

Our curriculum has been adapted to support children's return to school using the 5 Levers of the Recovery Curriculum.

THE 5 LEVERS OF RECOVERY

LEVER 1: RELATIONSHIPS

We will not necessarily expect our children to return joyfully. Many of the relationships that were thriving, such as with friends, teachers, supporting adults may need to be invested in and restored. We will plan for this to happen, not assume that it will.

LEVER 2: COMMUNITY

We will recognise that your child's curriculum will have been based at home for a long time. We will listen to what has happened in this time, understand the needs of our community and engage them in the transitioning of learning back into school.

LEVER 3: TRANSPARENT CURRICULUM

Our children may well feel they have lost time with their learning at school and we want to show them that we understand this and that we will help them to become confident learners at school.

LEVER 4: METACOGNITION

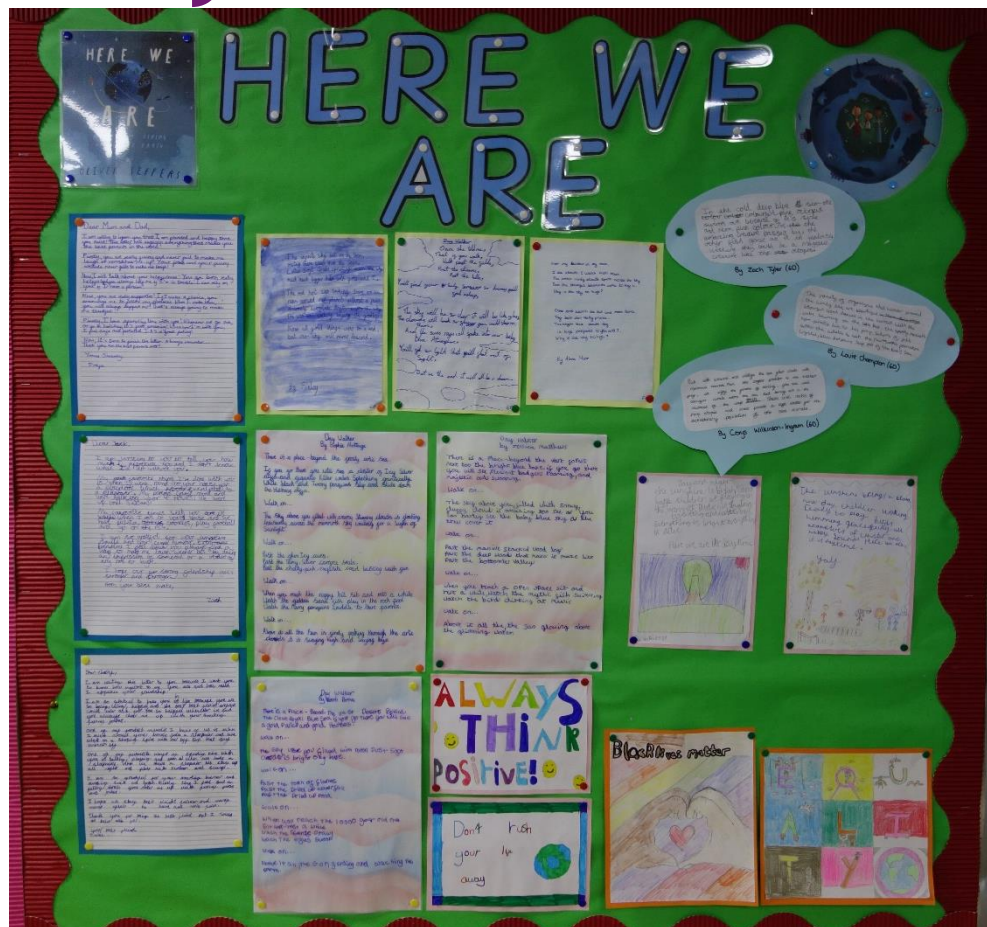
In different environments, children will have been learning in different ways and may have developed different styles of learning. It is vital that we acknowledge this.

LEVER 5: SPACE - TO BE, TO REDISCOVER SELF, AND TO FIND THEIR VOICE ON LEARNING IN THIS ISSUE

It is only natural that we all work at an incredible pace to make sure this group of learners are not disadvantaged against their peers, providing opportunity and exploration alongside the intensity of our expectations.



Recovery Curriculum...



This has included a whole school “Here I Am” English topic.



Pupil Voice

“I’m so happy to be back with my friends. Having our tables facing forwards and the one-way system make me feel safe.” Daniel, 6A

“It’s fantastic to be back! I like keeping my friends safe.” Izzy, 4E

“I feel really safe and surrounded by adults who help me.” Bailey, 5B

“I’m trying not to get too close to my friends and play games that don’t need touching. I always wash my hands before I eat and play.” Inaya, 3A